

School District of Palm Beach County, Florida

District Inclusion Plan

School Board Workshop
December 6, 2006
Curriculum and Learning Support

District Inclusion Plan

- District Inclusion Committee, Chaired by Dave Cantley, met during 05/06 school year.
- Committee consisted of principals, parents, teachers, CTA (with assistance provided by District staff).
- Draft Plan was completed in April 2006.
- Principals on committee brought Draft Plan to Principals' Division meetings for discussion.
- LRP Publications reviewed Draft Plan.
- General Counsel's Office reviewed Draft Plan.

Purpose

The purpose of the District Inclusion Plan is to provide a roadmap leading to an increase in the number of students with disabilities who are receiving services in general education classrooms, while at the same time adhering to the least restrictive environment provisions of the Individuals with Disabilities Education Act.

Summary of Revisions of May 2006
Draft

- Same Goal: Include more students in general education classrooms while ensuring educational benefit
- Plan today emphasizes the Least Restrictive Environment provisions of IDEA
- The IEP team remains the paramount factor

Revisions (cont'd.)

- Strong emphasis on schoolwide change to facilitate inclusive activities
- Placements are individually determined
- Continued strong emphasis on the regular classroom as the first consideration of the IEP team
- Removal of percentage goals

Successful Inclusion

The primary features that demonstrate successful inclusion are beliefs that:

- all students belong to the school community
- all students can make educational progress
- all placements are individually determined, not eligibility based

Goals of the Inclusion Plan

- Within three years, all schools will be equipped to provide inclusive programs for students with disabilities.
- Beginning in 2006, new teachers to Palm Beach County will receive information regarding the District's commitment to inclusion.
- District recruiters will receive information and training regarding the District's commitment to inclusion.

Goals of the Inclusion Plan

- Staff responsible for prekindergarten transitions to kindergarten will receive training in the LRE provisions of the IDEA and the use of the Infused Skills Grid.
- Beginning with the school year 2006/07, all new schools will open as inclusive schools. All staff will be required to attend staff development regarding (but not limited to) the areas of LRE, differentiated instruction, collaboration, curriculum modifications, scheduling, inclusion of students with significant disabilities.

What do we want to accomplish?

Given the implementation of the Inclusion Plan:

It is anticipated that the rate of placement into general education classrooms will continue to increase annually.

(The Inclusion Committee recognizes that the School District cannot mandate a particular placement; therefore, the purpose of the Inclusion Plan is to achieve a higher level of inclusion for all disabled students.)

Comparative Data
2005-06 School Year
 Source: Florida Department of Education – LEA Profile
 (December 1, 2005)

Regular Class Placement

Palm Beach	52%
Like-sized Districts	54%
State	55%

Resource Room Placement

Palm Beach	30%
Like-sized Districts	20%
State	19%

NOTE: 82% of SWD in Palm Beach County were either in resource or regular class placements as opposed to 74% statewide and compared to like-sized districts.

Comparative Data (cont'd.)

Separate Class

Palm Beach	15%
Like-sized Districts	22%
State	22%

Other Separate Environments

Palm Beach	3%
Like-sized Districts	3%
State	3%

**Separate Class Placement of Educable
Mentally Handicapped Students**

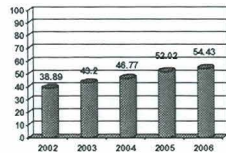
The DOE reports the percent of students who are educable mentally handicapped who spend less than 40% of the school day with non-disabled peers. *(NOTE: the lower the percentage, the more time spent in regular education)*

Palm Beach	45%
Like-sized Districts	61%
State	62%

Historic Placement Data

*minutes per week

October FTE Survey 2	Regular Class 0-315*
2006	54.43%
2005	52.02%
2004	46.77%
2003	43.20%
2002	38.89%



Budget

• **Three Year Option:**

Total cost to the School District is \$10,726,000 for the first three years, with an additional \$6,923,000 for four additional years.

- includes cost for one additional .5 allocation if school based inclusion facilitator per school to be phased in over three years
- includes cost for four additional District inclusion support staff
- includes cost for \$6000 stipend per school phased in over four years as school based inclusion facilitator is phased out

Budget (cont'd.)

• **Five Year Option:**

Total cost to the School District is \$16,905,000:

- includes cost for one additional .5 inclusion facilitator per school to be phased in over five years
- includes cost for \$6000 stipend per school to be phased in after the first three year period as inclusion facilitator is phased out

Parent Education and Information

Presentations to families of students with disabilities (first semester 06/07):

- October 14
- October 19
- October 26
- November 1
- November 9

Professional Development and School Support

- Learning Strategies
- Content Enhancement
- Station Teaching
- Wilson Reading
- SRA Reading Mastery
- SRA Corrective Reading
- Great Leaps Fluency

Professional Development and School Support

- Collaborative Planning and Teaching
- Multiple Intelligences/Cooperative Learning
- Differentiated Instruction
- PATH and Action Plans
- Scheduling
- IEP

Professional Development and School Support

Accessing the General Ed. Curriculum:
Read and Write Gold

LoTTIE: Low Tech Tools for Inclusive
Education

Handwriting without Tears

Meaningful IEP Goals and Objectives

Accommodations and Modifications

Blended Resources

Center for Autism and Related Disabilities:
Including Students with Autism

K-12 Social Studies

K-12 Mathematics

Florida Inclusion Network/BEES: Meaningful
Participation

(All Title I funds are now blended among
ELL, ESE, K-12, Choice)

Handouts

- Draft Inclusion Plan dated 12/06
- Center for Evaluation and Education Policy Brief: What is the Impact of NCLB on the Inclusion of Students with Disabilities?
- Inclusion Data in Palm Beach County
- School Inclusion Self-checklist
- LRE Considerations

The School District of
Falm Beach County, Florida

Celebrates

National Inclusive Schools Week
December 4-8, 2006

opening doors to the future

*Great Things Happen
In Inclusive Schools!*
